

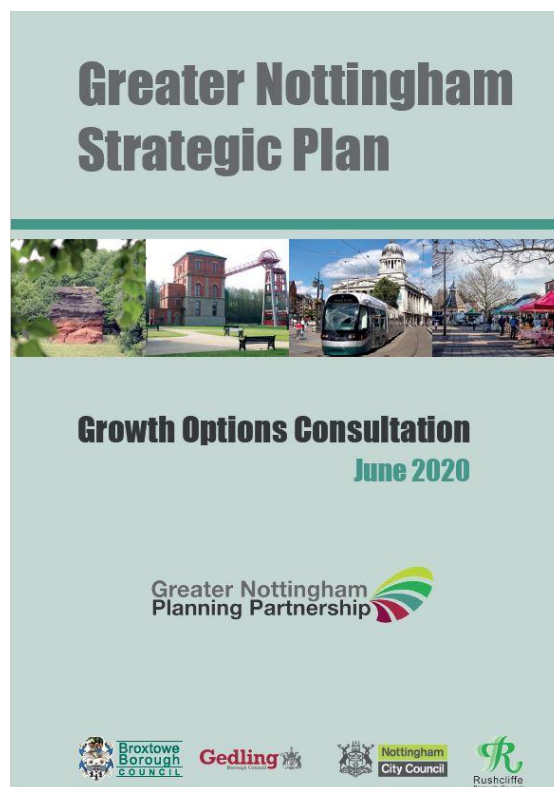
# Greater Nottingham Strategic Plan Growth Options Consultation

**Comment by Monday 14 September 2020**

The Greater Nottingham Strategic Plan will guide development of the area **up to 2038**.

The plan will include **planning policies and proposals** for housing and employment, climate change, the natural environment, heritage, design, transport, infrastructure and more.

The **consultation document** asks several questions that you can respond to. Responses will inform the drafting of the Strategic Plan for further consultation in 2021.



**View the consultation documents  
and further information:**

Website: [www.gnplan.org.uk](http://www.gnplan.org.uk)

Email: [localdevelopment@rushcliffe.gov.uk](mailto:localdevelopment@rushcliffe.gov.uk)

Telephone Rushcliffe Planning Policy team: **0115 981 9911**

Twitter: [@gnplan.org.uk](https://twitter.com/gnplan.org.uk)