

## Active Rushcliffe Health Partnership 'Healthy Futures Fund' 2019

### Invitation for proposals

#### What is the 'Healthy Futures Fund'?

The Healthy Futures Fund has been provided by Rushcliffe Borough Council to support local initiatives that aim to improve health & wellbeing and reduce health inequalities.

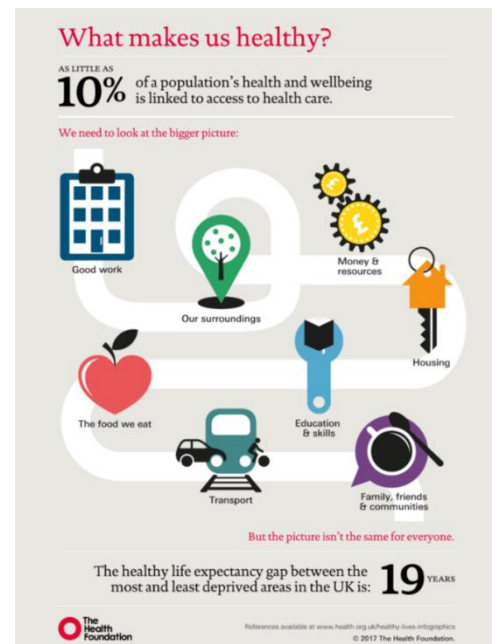
Locally, this funding is allocated through the Active Rushcliffe Health Partnership (ARHP). We are now inviting local groups and organisations to put forward proposals for setting up, sustaining or expanding projects that take innovative approaches to improving the health of Rushcliffe residents.

#### What types of projects are likely to be successful?

Successful projects will promote health and well-being by identifying and addressing inequalities in health or the factors that cause ill-health. Projects can cover a number of themes and deliver in one or more geographical areas. We are particularly keen to support projects which target the areas of highest need within the Borough of Rushcliffe and take an innovative approach to improve the wider determinants of health.

Proposals must tackle at least one of the Partnership's priorities and meet the following criteria:

1. The project must be evidence based – the proposal must include evidence of need (how did you identify the need and whom have you consulted?) and be clear about how the project will make a difference to the health & wellbeing of participants.
2. Projects will need very specific aims, objectives and measurable outcomes and need to be able to indicate how these will be monitored and evaluated.
3. The project must be accessible and culturally relevant to the target group, be community led and build in plans for the on-going sustainability of the project.



#### What are Rushcliffe's Health & Wellbeing priorities?

An outline of the priorities, ambitions and current / future actions of the partnership is available via the Active Rushcliffe Health Partnership strategy document:

[www.rushcliffe.gov.uk/activerushcliffehealthpartnership](http://www.rushcliffe.gov.uk/activerushcliffehealthpartnership)

#### How much can a group or organisation apply for?

It is anticipated that the majority of applications will be for up to £1500 per project but larger amounts will be considered. Please note applications are limited to one project per organisation.

### **How will funding be accessed?**

Please complete a proposal using the electronic application form. An acknowledgment of receipt of your application will be sent to you via email. You can expect to hear a response from within 10 working days. Proposers may be asked for additional information, further clarifications or modifications before the final agreement.

### **How will groups or organisations be supported?**

The Partnership is keen to hear from a wide range of groups. We recognise that some small groups may need additional support to plan, deliver or evaluate their project, so please do get in touch to discuss your ideas.

### **Funding Conditions**

- Healthy Lives, Healthy Futures funding is available for one year only, the funding must be spent the end of April 2020. The expectation is that the project or group will become self-sustaining after that time or seek another source of recurrent funding
- To qualify for a grant the group must be set up formally and have a bank account in the group's name. Groups and organisations will need to keep receipts/records of spend as these may be requested.
- If your project will involve children, young people or vulnerable adults, please send a copy of any relevant policies (e.g. Child Protection or Working with Vulnerable Adults) and ensure that all essential checks are in place
- All groups and organisations that receive funding will be required to send brief midpoint email update and final report/evaluation to the Rushcliffe Health Partnership. The final report will need to illustrate how health outcomes were achieved and provide a breakdown of how the funding was spent. The application will need to identify how the outcomes will be measured and evaluated (methods can include photos, questionnaires, quotations, case studies, press releases etc.)
- All groups and organisations that are successful will be required to include the Active Rushcliffe Health Partnership's logo and the Rushcliffe Borough Council's logo on all publicity materials along with the following statement 'This project has been funded by Rushcliffe Borough Council in partnership with NHS Rushcliffe Clinical Commissioning as part of Active Rushcliffe Health Partnership'.

### **Funding cannot be given:**

- To profit-making organisations
- To organisations that are politically affiliated or for projects that promote a particular religious group (faith organisations can apply, but the project should not promote any particular religious views)
- To fund core or running costs of an existing organisations, although start-up costs for a new initiative may be considered

**For any queries about the 'Healthy Futures Fund' please contact Alex Julian, Health Development Officer on 0115 9148 233 or [ajulian@rushcliffe.gov.uk](mailto:ajulian@rushcliffe.gov.uk)**